

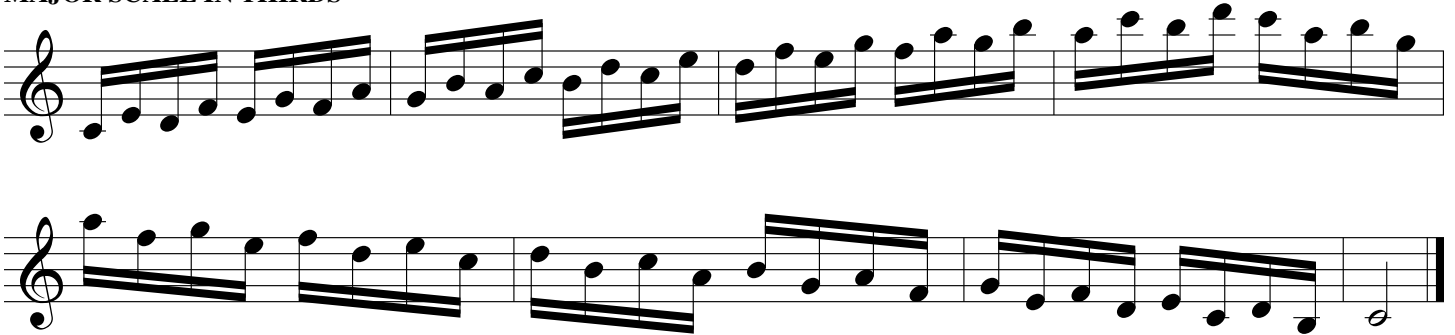
# C Series

Learn all patterns slurred, then add articulations after notes are mastered.  
Always use the alternate fingerings indicated.

## MAJOR SCALE



## MAJOR SCALE IN THIRDS



## HARMONIC MINOR SCALE



## MELODIC MINOR SCALE



## TRIADS



## Diminished



## SEVENTH CHORDS

Musical notation for seven types of seventh chords, each with a 'bis' (bisma) exercise:

- M7**: Major seventh chord.
- Dom. 7**: Dominant seventh chord.
- m7**: Minor seventh chord.
- ø7**: Half-diminished seventh chord.
- ø7**: Another example of a half-diminished seventh chord.

## CHROMATIC SCALE

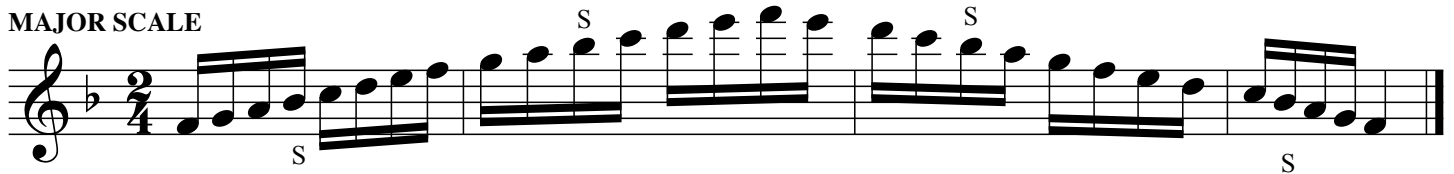
(Always use Side Bb, Side C, and Alternate F# in chromatic scales)

Musical notation for chromatic scales, showing ascending and descending lines with specific fingering and side labels:

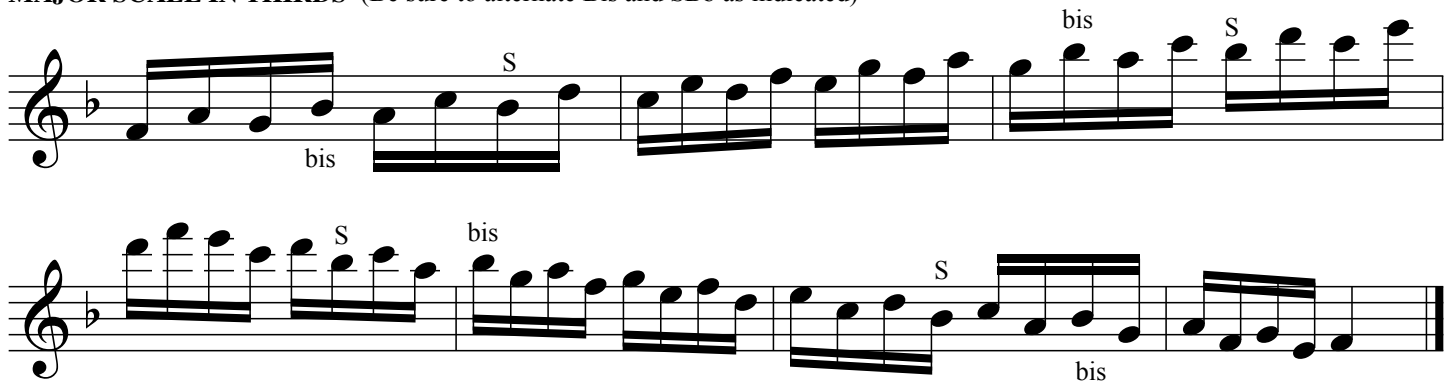
- Ascending scale: fx, SBb, SC, fx, SBb.
- Descending scale: SC, SBb, fx, SC, SBb, fx.

# F Series

## MAJOR SCALE



## MAJOR SCALE IN THIRDS (Be sure to alternate Bis and SBb as indicated)



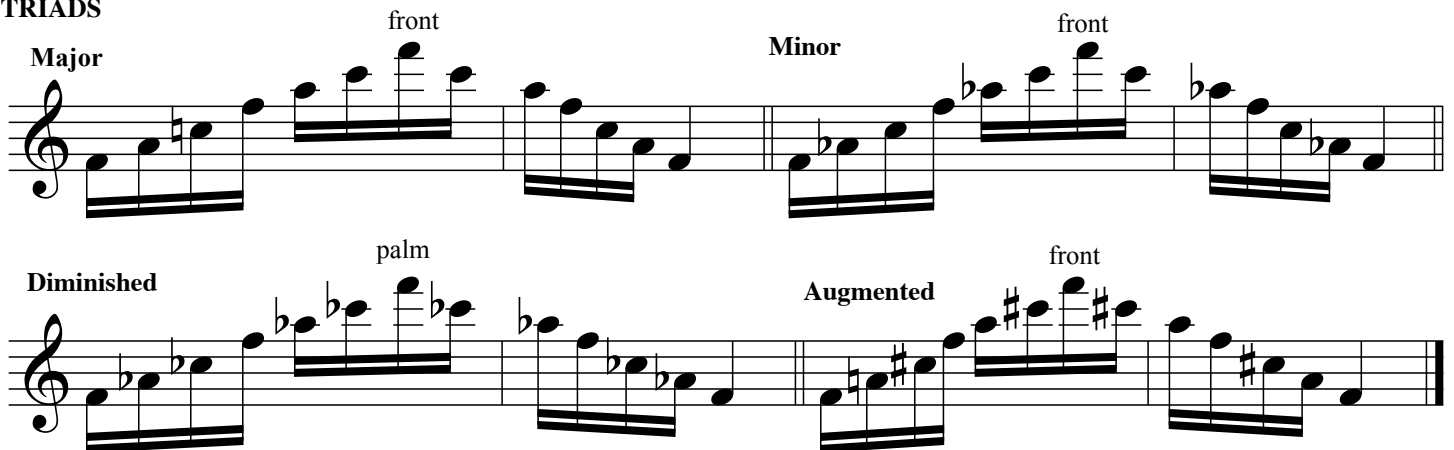
## HARMONIC MINOR SCALE



## MELODIC MINOR SCALE



## TRIADS



SEVENTH CHORDS

front

M7

Dom. 7

palm

m7

ø7

o7

CHROMATIC SCALE (use fx, SBb, SC)

# G Series

## MAJOR SCALE

## MAJOR SCALE IN THIRDS

## HARMONIC MINOR SCALE

## MELODIC MINOR SCALE

## TRIADS Major

## Minor

## Diminished

## Augmented

## SEVENTH CHORDS

## CHROMATIC SCALE (Use SBb, SC, fx)



# SEVENTH CHORDS

M7

Musical notation for the M7 chord exercise. It consists of a single staff with a treble clef and a key signature of one flat (Bb). The exercise is a chromatic scale starting on Bb, moving up and then down. The word "bis" is written above the first measure. The notation includes slurs and ties to indicate the chromatic movement.

Dom. 7

Musical notation for the Dom. 7 chord exercise. It consists of a single staff with a treble clef and a key signature of one flat (Bb). The exercise is a chromatic scale starting on Bb, moving up and then down. The word "bis" is written above the first measure. The notation includes slurs and ties to indicate the chromatic movement.

m7

Musical notation for the m7 chord exercise. It consists of a single staff with a treble clef and a key signature of one flat (Bb). The exercise is a chromatic scale starting on Bb, moving up and then down. The word "bis" is written above the first measure. The notation includes slurs and ties to indicate the chromatic movement. The label "LC#....." is written below the staff.

ø7

Musical notation for the ø7 chord exercise. It consists of a single staff with a treble clef and a key signature of one flat (Bb). The exercise is a chromatic scale starting on Bb, moving up and then down. The word "bis" is written above the first measure. The notation includes slurs and ties to indicate the chromatic movement. The label "LC#....." is written below the staff.

o7

Musical notation for the o7 chord exercise. It consists of a single staff with a treble clef and a key signature of one flat (Bb). The exercise is a chromatic scale starting on Bb, moving up and then down. The word "bis" is written above the first measure. The notation includes slurs and ties to indicate the chromatic movement.

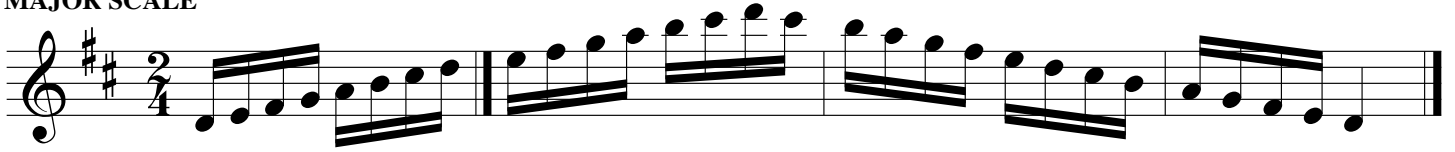
# CHROMATIC SCALE (use fx, SBb, SC)

Musical notation for the first chromatic scale exercise. It consists of a single staff with a treble clef and a key signature of one flat (Bb). The exercise is a chromatic scale starting on Bb, moving up and then down. The notation includes slurs and ties to indicate the chromatic movement.

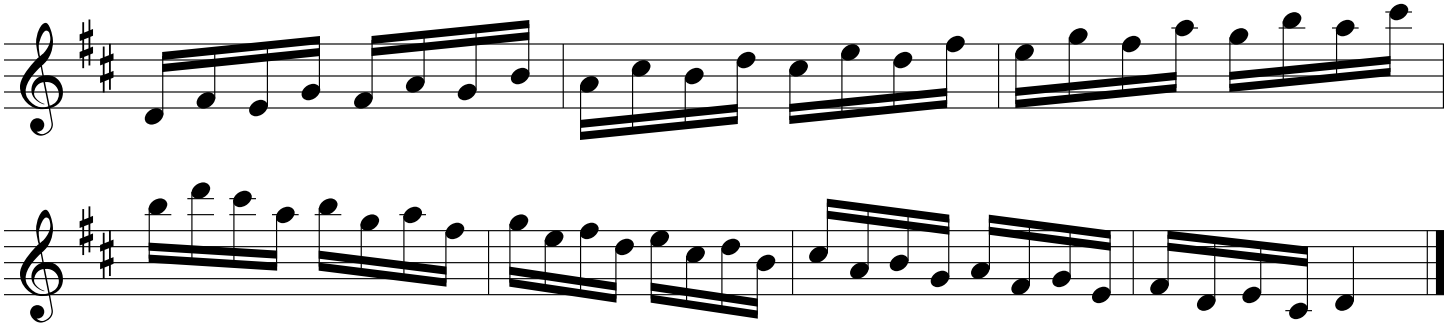
Musical notation for the second chromatic scale exercise. It consists of a single staff with a treble clef and a key signature of one flat (Bb). The exercise is a chromatic scale starting on Bb, moving up and then down. The notation includes slurs and ties to indicate the chromatic movement.

# D Series

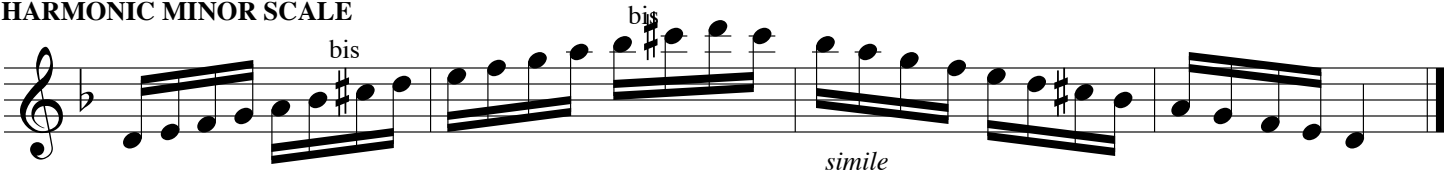
## MAJOR SCALE



## MAJOR SCALE IN THIRDS



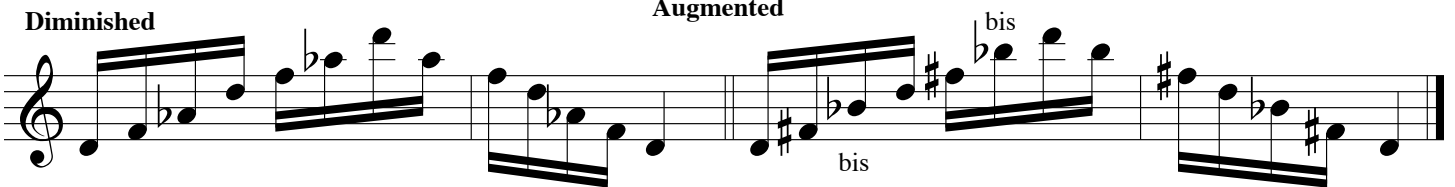
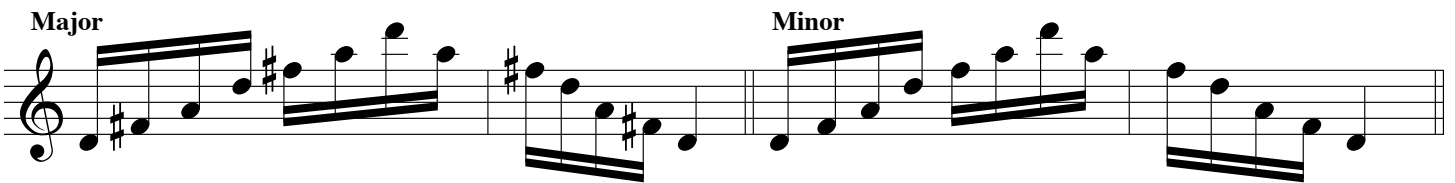
## HARMONIC MINOR SCALE



## MELODIC MINOR SCALE



## TRIADS





SEVENTH CHORDS

M7



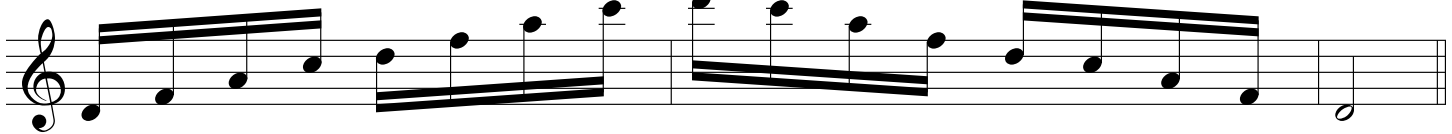
Musical notation for the Major 7th (M7) chord scale. The scale is shown in two directions: ascending and descending. The notes are: C4, C#4, D4, E4, F#4, G4, A4, B4, C5 (ascending); and C5, B4, A4, G4, F#4, E4, D4, C#4, C4 (descending).

Dom. 7



Musical notation for the Dominant 7th (Dom. 7) chord scale. The scale is shown in two directions: ascending and descending. The notes are: C4, C#4, D4, E4, F4, G4, A4, B4, C5 (ascending); and C5, B4, A4, G4, F4, E4, D4, C#4, C4 (descending).

m7



Musical notation for the minor 7th (m7) chord scale. The scale is shown in two directions: ascending and descending. The notes are: C4, D4, E4, F4, G4, A4, Bb4, C5 (ascending); and C5, Bb4, A4, G4, F4, E4, D4, C4 (descending).

ø7



Musical notation for the half-diminished 7th (ø7) chord scale. The scale is shown in two directions: ascending and descending. The notes are: C4, D4, Eb4, F4, G4, Ab4, Bb4, C5 (ascending); and C5, Bb4, Ab4, G4, F4, Eb4, D4, C4 (descending).

o7



Musical notation for the fully diminished 7th (o7) chord scale. The scale is shown in two directions: ascending and descending. The notes are: C4, D4, Eb4, Fb4, G4, Ab4, Bb4, C5 (ascending); and C5, Bb4, Ab4, G4, Fb4, Eb4, D4, C4 (descending).

CHROMATIC SCALE (use fx, SBb, SC)



Musical notation for the chromatic scale. The scale is shown in two directions: ascending and descending. The notes are: C4, C#4, D4, D#4, E4, E#4, F4, F#4, G4, G#4, A4, A#4, B4, B#4, C5 (ascending); and C5, B#4, B4, A#4, A4, G#4, G4, F#4, F4, E#4, E4, D#4, D4, C#4, C4 (descending).

# Eb Series

## MAJOR SCALE

Musical notation for the Eb Major Scale in 2/4 time. The scale is written on a single staff with a treble clef and a key signature of three flats (Bb, Eb, Ab). It begins with a dynamic marking 'S' and ends with a double bar line.

## MAJOR SCALE IN THIRDS

Musical notation for the Eb Major Scale in Thirds, consisting of two staves. The first staff starts with a dynamic marking 'S' and includes the instruction 'bis' below the notes. The second staff includes the instruction 'simile' below the notes. The key signature is three flats and the time signature is 2/4.

## HARMONIC MINOR SCALE

Musical notation for the Eb Harmonic Minor Scale in 2/4 time. The scale is written on a single staff with a treble clef and a key signature of three flats. It begins with a dynamic marking 'S' and ends with a double bar line.

## MELODIC MINOR SCALE

Musical notation for the Eb Melodic Minor Scale in 2/4 time. The scale is written on a single staff with a treble clef and a key signature of three flats. It begins with a dynamic marking 'S' and ends with a double bar line.

## TRIADS

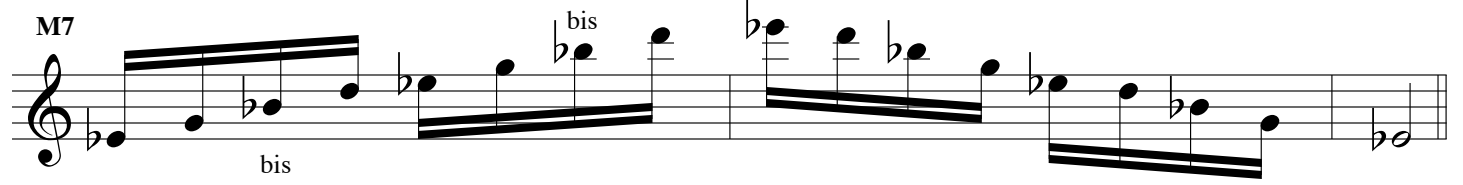
Musical notation for Major and Minor triads in Eb. The first section, labeled 'Major', shows the triads Eb3, Ab3, and Bb3, with a 'bis' instruction below. The second section, labeled 'Minor', shows the triads Eb4, Ab4, and Bb4, also with a 'bis' instruction below. The key signature is three flats and the time signature is 2/4.

## Diminished

Musical notation for Diminished and Augmented triads in Eb. The first section, labeled 'Diminished', shows the triads Eb5, Ab5, and Bb5. The second section, labeled 'Augmented', shows the triads Eb6, Ab6, and Bb6. The key signature is three flats and the time signature is 2/4.

SEVENTH CHORDS

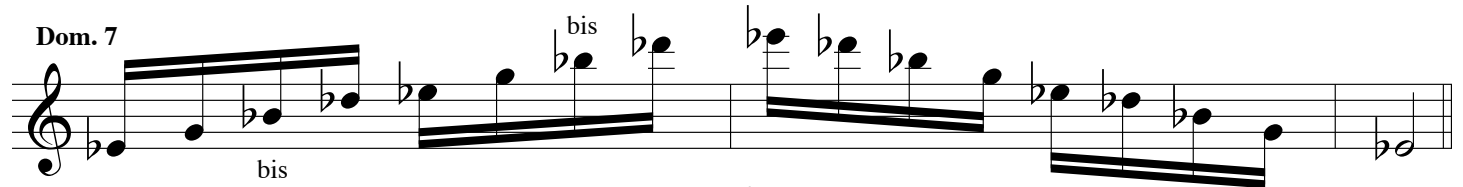
M7



bis

Detailed description: This block shows the first staff of music for the M7 chord. It consists of a treble clef with a key signature of one flat (Bb). The melody is written on a single staff with eighth notes and quarter notes. The bass line is indicated by a double line below the staff. The word "bis" is written below the staff near the beginning of the phrase.

Dom. 7



bis

Detailed description: This block shows the second staff of music for the Dom. 7 chord. It features a treble clef and a key signature of one flat. The notation includes a melody with eighth notes and quarter notes, and a bass line indicated by a double line. The word "bis" is written below the staff.

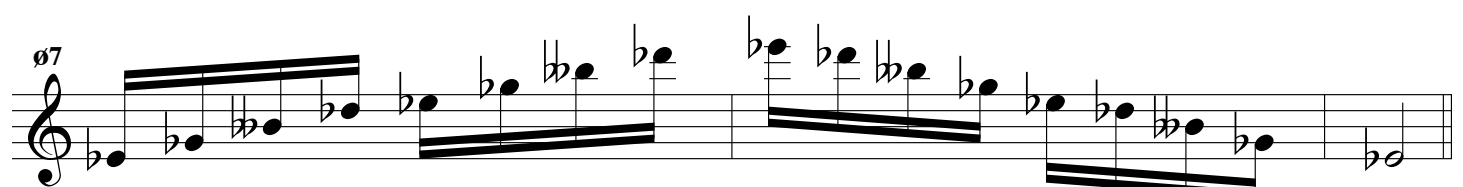
m7



bis

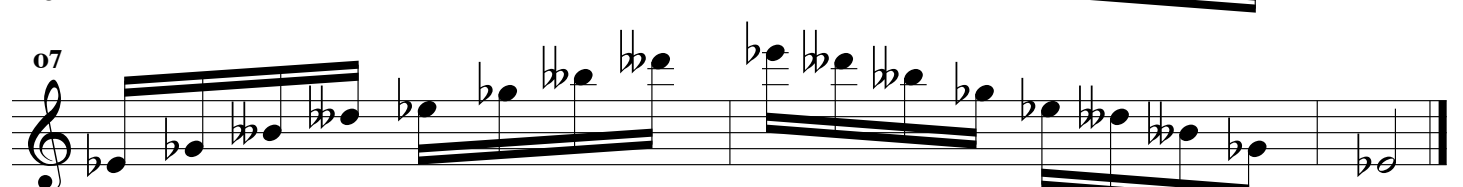
Detailed description: This block shows the third staff of music for the m7 chord. It has a treble clef and a key signature of one flat. The melody is written with eighth notes and quarter notes, accompanied by a bass line indicated by a double line. The word "bis" is written below the staff.

ø7



Detailed description: This block shows the fourth staff of music for the ø7 chord. It features a treble clef and a key signature of one flat. The notation includes a melody with eighth notes and quarter notes, and a bass line indicated by a double line.

o7

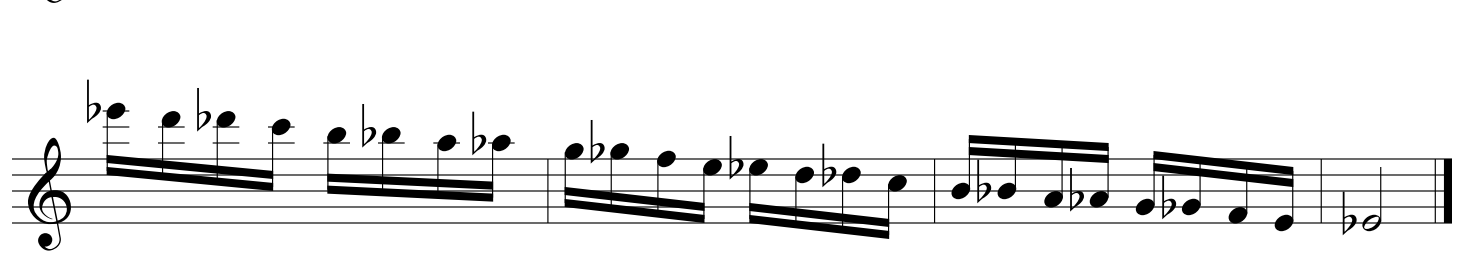


Detailed description: This block shows the fifth staff of music for the o7 chord. It has a treble clef and a key signature of one flat. The notation includes a melody with eighth notes and quarter notes, and a bass line indicated by a double line.

CHROMATIC SCALE (use fx, SBb, SC)



Detailed description: This block shows the first staff of the chromatic scale exercise. It features a treble clef and a key signature of one flat. The melody is written with eighth notes and quarter notes, including accidentals (sharps and flats) to indicate chromatic movement. The bass line is indicated by a double line.



Detailed description: This block shows the second staff of the chromatic scale exercise. It features a treble clef and a key signature of one flat. The melody continues with eighth notes and quarter notes, including accidentals. The bass line is indicated by a double line.

# A Series

## MAJOR SCALE

## MAJOR SCALE IN THIRDS

## HARMONIC MINOR SCALE

## MELODIC MINOR SCALE

## TRIADS

Major                      Minor                      Diminished                      Augmented

## SEVENTH CHORDS

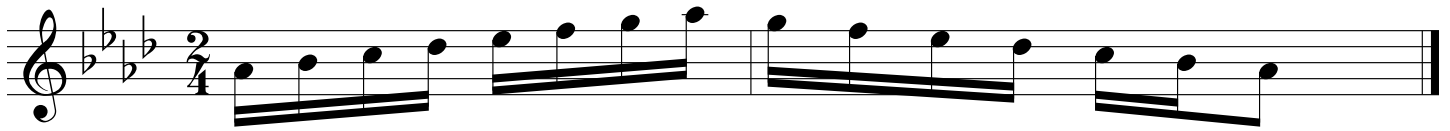
M7    Dom. 7

m7    ø7    o7

## CHROMATIC SCALE (use fx, SBb, SC)

# Ab Series

## MAJOR SCALE



## MAJOR SCALE IN THIRDS



## HARMONIC MINOR SCALE



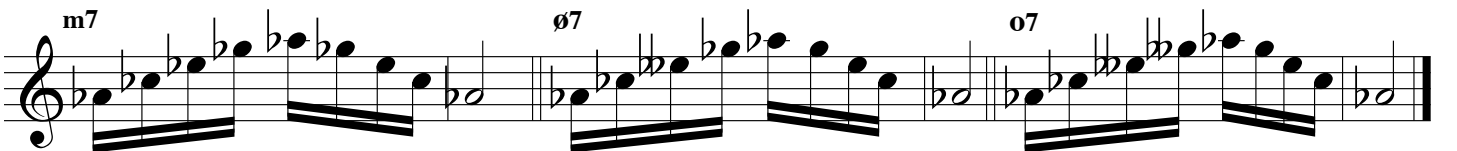
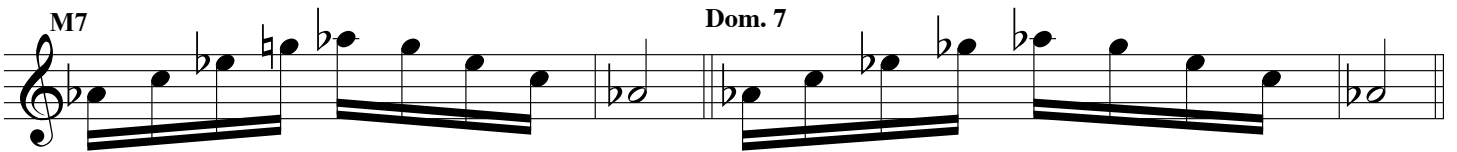
## MELODIC MINOR SCALE



## TRIADS



## SEVENTH CHORDS

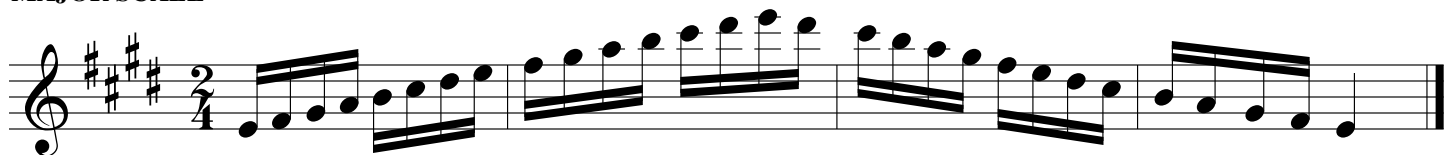


## CHROMATIC SCALE (use fx, SBb, SC)

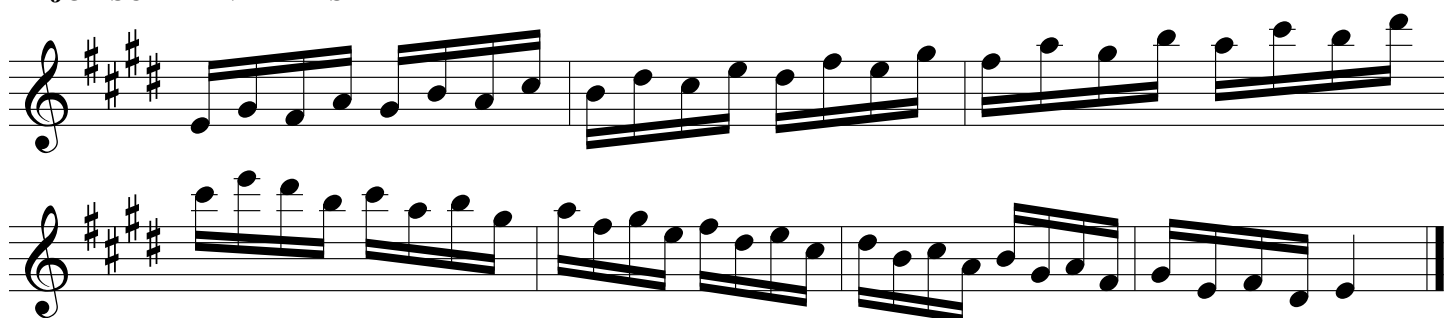


# E Series

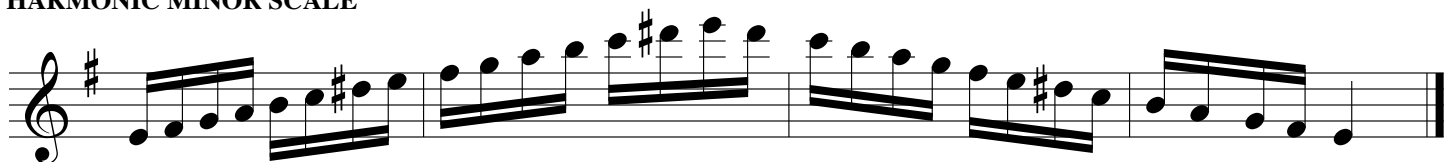
## MAJOR SCALE



## MAJOR SCALE IN THIRDS



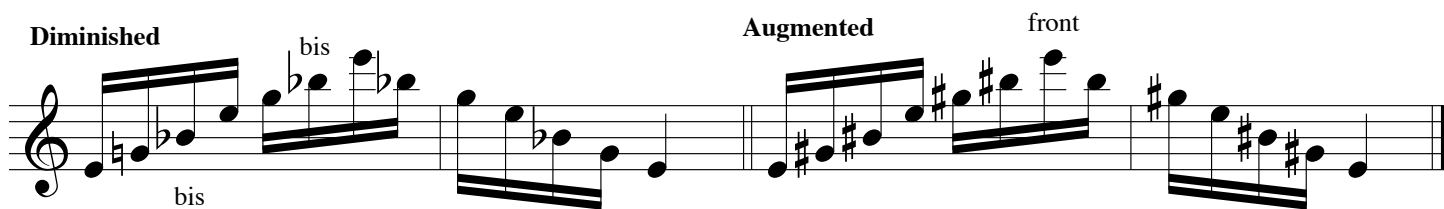
## HARMONIC MINOR SCALE



## MELODIC MINOR SCALE



## TRIADS



SEVENTH CHORDS

M7

Dom. 7

m7

ø7

bis

o7

bis

bis

front

Detailed description: This section contains five staves of musical notation, each representing a different type of seventh chord. The first staff is for Major 7th (M7), the second for Dominant 7th (Dom. 7), the third for minor 7th (m7), the fourth for Half-Diminished 7th (ø7), and the fifth for Diminished 7th (o7). Each staff shows a sequence of notes in a specific fingering pattern, with some notes marked with 'bis' or 'front' to indicate fingerings. The notes are written on a single staff with a treble clef and a key signature of one sharp (F#).

CHROMATIC SCALE (use fx, SBb, SC)

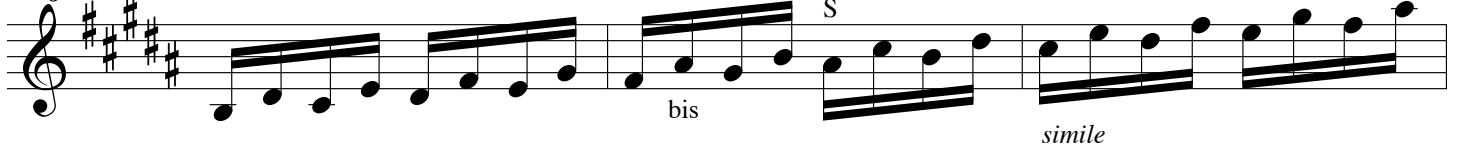
Detailed description: This section shows a chromatic scale in two staves. The first staff shows the ascending scale from C4 to C5, and the second staff shows the descending scale from C5 to C4. The notes are written on a single staff with a treble clef and a key signature of one sharp (F#).

# B Series

## MAJOR SCALE



## MAJOR SCALE IN THIRDS



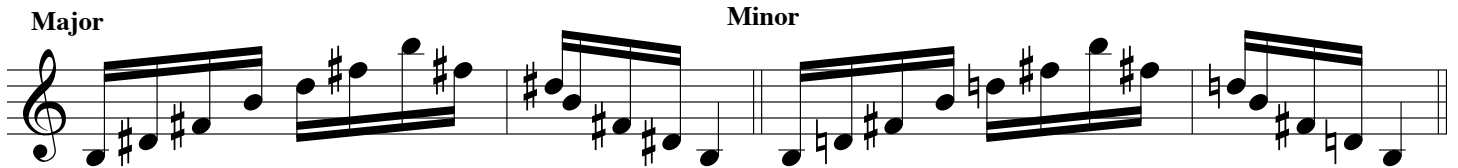
## HARMONIC MINOR SCALE



## MELODIC MINOR SCALE



## TRIADS



## Diminished





## SEVENTH CHORDS

M7

Musical notation for the Major 7th chord (M7) scale. The scale is written in treble clef, starting on C4. The notes are C4, D4, E4, F#4, G4, A4, B4, and C5. The bass line is written in bass clef, starting on C3. The notes are C3, F#2, G2, A2, B2, and C3. Fingering numbers 1 and 5 are indicated above the notes.

Dom. 7

Musical notation for the Dominant 7th chord (Dom. 7) scale. The scale is written in treble clef, starting on C4. The notes are C4, D4, E4, F#4, G4, A4, Bb4, and C5. The bass line is written in bass clef, starting on C3. The notes are C3, F#2, G2, A2, Bb2, and C3.

m7

Musical notation for the minor 7th chord (m7) scale. The scale is written in treble clef, starting on C4. The notes are C4, D4, Eb4, F4, G4, Ab4, and C5. The bass line is written in bass clef, starting on C3. The notes are C3, F4, G4, Ab4, and C3.

ø7

Musical notation for the Half-diminished 7th chord (ø7) scale. The scale is written in treble clef, starting on C4. The notes are C4, D4, Eb4, F4, G4, Ab4, Bb4, and C5. The bass line is written in bass clef, starting on C3. The notes are C3, F4, G4, Ab4, Bb4, and C3.

o7

Musical notation for the Diminished 7th chord (o7) scale. The scale is written in treble clef, starting on C4. The notes are C4, D4, Eb4, F4, G4, Ab4, Bb4, Cb5, and C5. The bass line is written in bass clef, starting on C3. The notes are C3, F4, G4, Ab4, Bb4, Cb5, and C3.

## CHROMATIC SCALE (use fx, SBb, SC)

Musical notation for the chromatic scale ascending. The scale is written in treble clef, starting on C4. The notes are C4, C#4, D4, D#4, E4, E#4, F4, F#4, G4, G#4, A4, A#4, B4, B#4, and C5.

Musical notation for the chromatic scale descending. The scale is written in treble clef, starting on C5. The notes are C5, B#4, B4, A#4, A4, G#4, G4, F#4, F4, E#4, E4, D#4, D4, C#4, and C4.

# F# Series

## MAJOR SCALE

Musical notation for the F# Major Scale in 2/4 time. The scale is written on a single staff with a treble clef and a key signature of three sharps (F#, C#, G#). The notes are: F#4, G#4, A4, B4, C#5, D5, E5, F#5. The notation includes slurs and accents, with a 'S' marking below the first measure.

## MAJOR SCALE IN THIRDS (Be sure to alternate Bis and SBb as indicated)

Musical notation for the F# Major Scale in Thirds, consisting of two staves. The first staff shows the ascending scale with notes: F#4, G#4, A4, B4, C#5, D5, E5, F#5. It includes markings for 'bis' and 'S'. The second staff shows the descending scale with notes: F#5, E5, D5, C#5, B4, A4, G#4, F#4. It includes the marking 'simile'.

## HARMONIC MINOR SCALE

Musical notation for the F# Harmonic Minor Scale in 2/4 time. The scale is written on a single staff with a treble clef and a key signature of three sharps. The notes are: F#4, G#4, A4, B4, C#5, D5, E5, F#5. The notation includes slurs and accents, with 'fx' markings above the 7th and 8th notes.

## MELODIC MINOR SCALE

Musical notation for the F# Melodic Minor Scale in 2/4 time. The scale is written on a single staff with a treble clef and a key signature of three sharps. The notes are: F#4, G#4, A4, B4, C#5, D5, E5, F#5. The notation includes slurs and accents.

## TRIADS

Musical notation for F# Triads, consisting of two staves. The first staff shows Major and Minor triads. The Major triad is marked 'bis' and 'front + f#'. The Minor triad is marked 'front + f#'. The second staff shows Diminished and Augmented triads. The Diminished triad is marked 'front'. The Augmented triad is marked 'bis' and 'palm'. The notation includes slurs and accents.

SEVENTH CHORDS

M7

bis

fx

front

Musical notation for the M7 chord exercise. It consists of a single staff in treble clef with a key signature of one sharp (F#). The exercise is divided into three measures. The first measure contains a quarter note G4 with a 'bis' annotation above it. The second measure contains a quarter note A4 with a 'fx' annotation above it. The third measure contains a quarter note B4 with a 'front' annotation above it. The notes are connected by a line, and there are additional notes on the staff, likely representing the full chord voicings.

Dom. 7

bis

palm

Musical notation for the Dom. 7 chord exercise. It consists of a single staff in treble clef with a key signature of one sharp (F#). The exercise is divided into three measures. The first measure contains a quarter note G4 with a 'bis' annotation above it. The second measure contains a quarter note A4 with a 'palm' annotation above it. The third measure contains a quarter note B4 with a 'palm' annotation above it. The notes are connected by a line, and there are additional notes on the staff, likely representing the full chord voicings.

m7

Musical notation for the m7 chord exercise. It consists of a single staff in treble clef with a key signature of one sharp (F#). The exercise is divided into three measures. The first measure contains a quarter note G4. The second measure contains a quarter note A4. The third measure contains a quarter note B4. The notes are connected by a line, and there are additional notes on the staff, likely representing the full chord voicings.

ø7

Musical notation for the ø7 chord exercise. It consists of a single staff in treble clef with a key signature of one sharp (F#). The exercise is divided into three measures. The first measure contains a quarter note G4. The second measure contains a quarter note A4. The third measure contains a quarter note B4. The notes are connected by a line, and there are additional notes on the staff, likely representing the full chord voicings.

o7

Musical notation for the o7 chord exercise. It consists of a single staff in treble clef with a key signature of one sharp (F#). The exercise is divided into three measures. The first measure contains a quarter note G4. The second measure contains a quarter note A4. The third measure contains a quarter note B4. The notes are connected by a line, and there are additional notes on the staff, likely representing the full chord voicings.

CHROMATIC SCALE (use fx, SBb, SC)

Musical notation for the chromatic scale exercise (top line). It consists of a single staff in treble clef with a key signature of one sharp (F#). The exercise is divided into three measures. The first measure contains a quarter note G4. The second measure contains a quarter note A4. The third measure contains a quarter note B4. The notes are connected by a line, and there are additional notes on the staff, likely representing the full chord voicings.

Musical notation for the chromatic scale exercise (bottom line). It consists of a single staff in treble clef with a key signature of one sharp (F#). The exercise is divided into three measures. The first measure contains a quarter note G4. The second measure contains a quarter note A4. The third measure contains a quarter note B4. The notes are connected by a line, and there are additional notes on the staff, likely representing the full chord voicings.

# C# Series

## MAJOR SCALE

S *simile*

## MAJOR SCALE IN THIRDS

bis S *simile*

## HARMONIC MINOR SCALE

## MELODIC MINOR SCALE

S

## TRIADS

### Major

LC#..... (optional.....) LC#.....

### Minor

LC#..... (optional.....) LC#.....

### Diminished

### Augmented

## SEVENTH CHORDS

M7

LC#.....

LC#.....

Dom. 7

LC#.....

LC#.....

m7

LC#.....

LC#.....

ø7

ø7

ø7

bis

## CHROMATIC SCALE

(Always use Side Bb, Side C, and Alternate F# in chromatic scales)